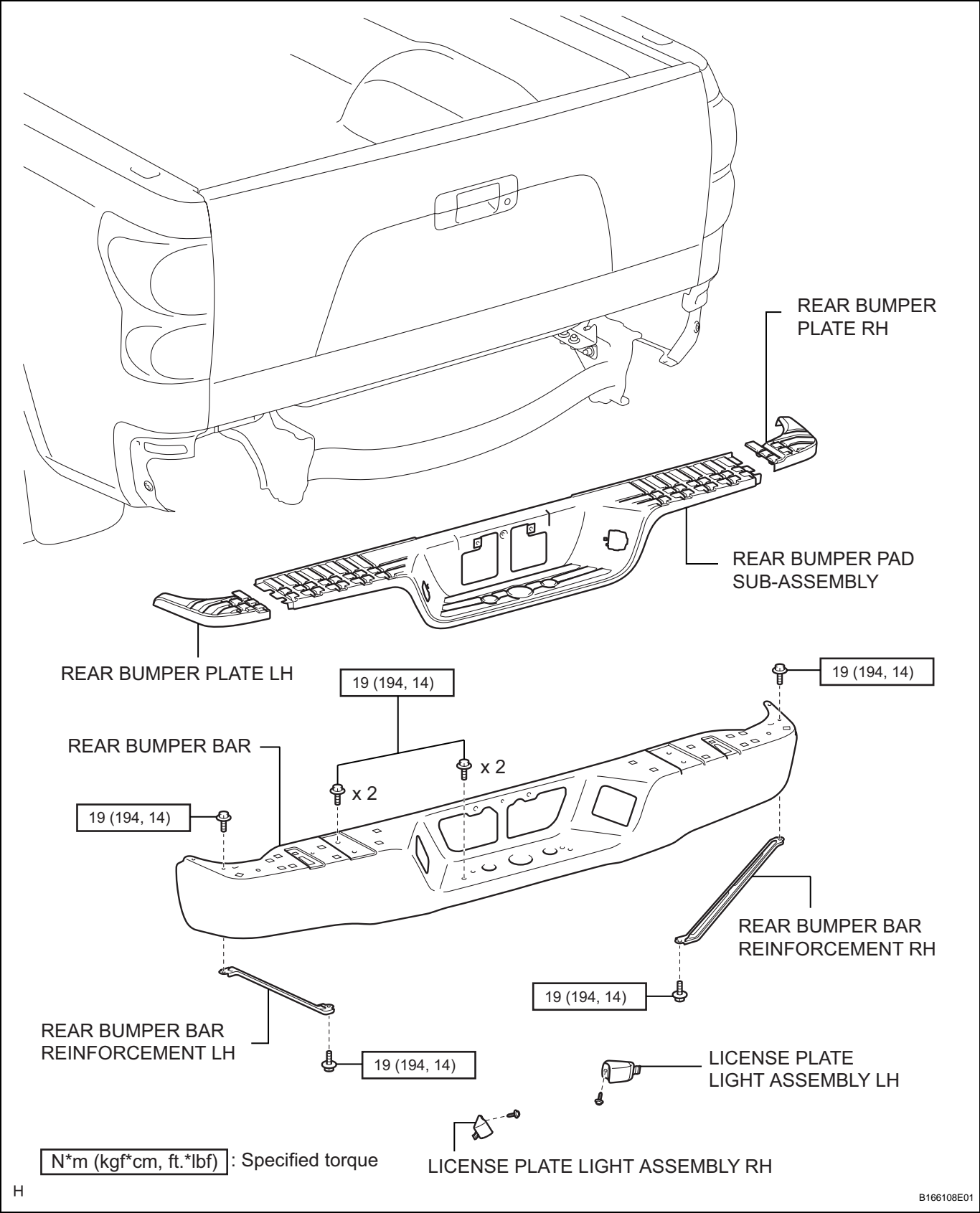
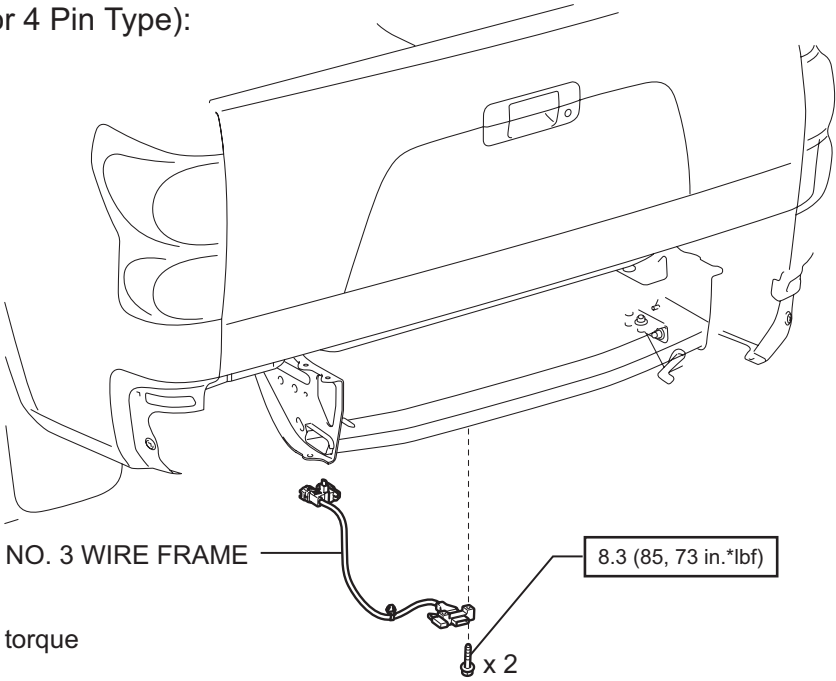


REAR BUMPER (for Steel Type Bumper)

COMPONENTS



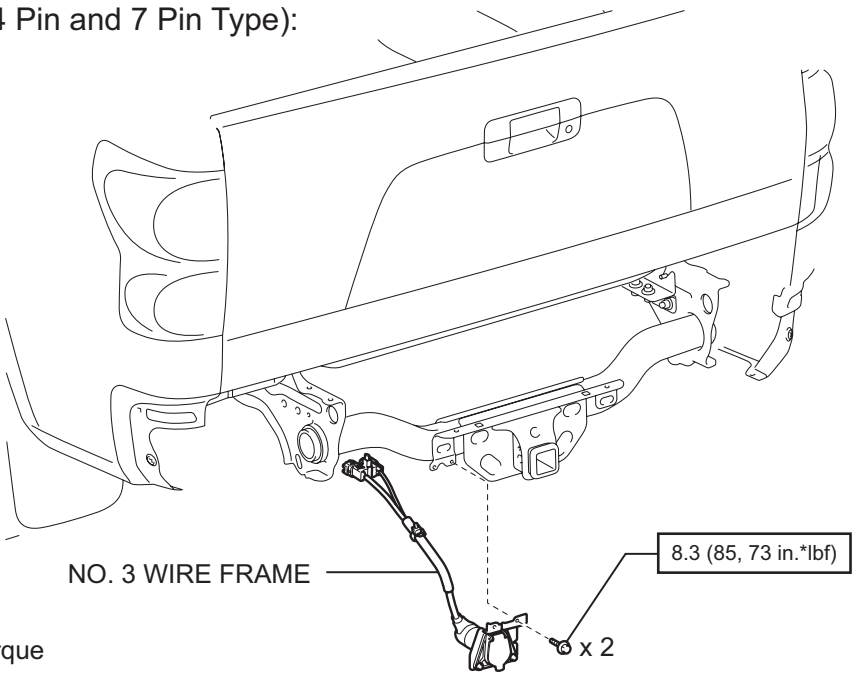
w/ Trailer Towing System (for 4 Pin Type):



N*m (kgf*cm, ft.*lbf) : Specified torque

B168024E01

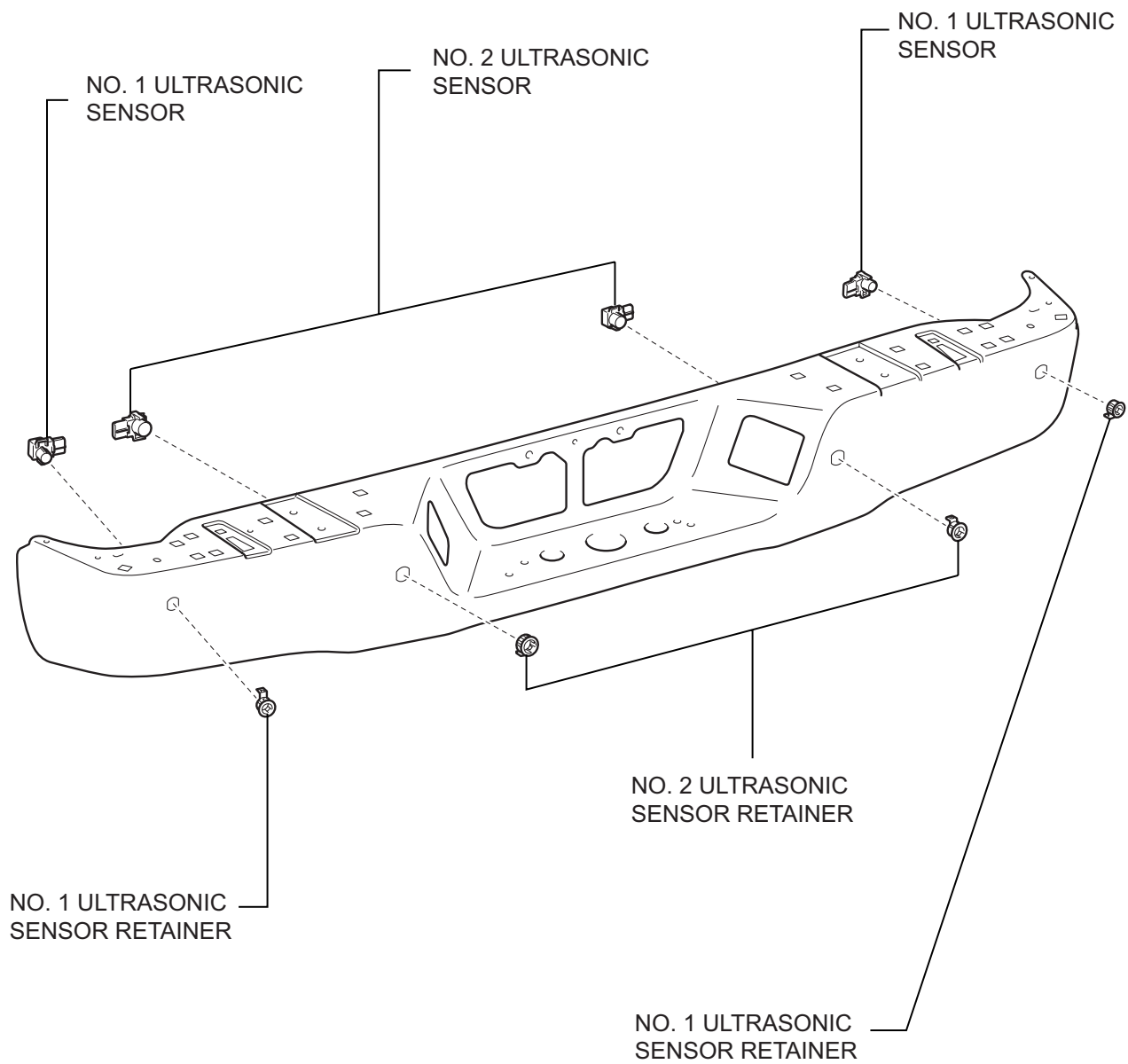
w/ Trailer Towing System (for 4 Pin and 7 Pin Type):



N*m (kgf*cm, ft.*lbf) : Specified torque

B168025E01

w/ Intuitive Parking Assist System:



ET